

## Pure-AMC

### **Alternative Fistula Risk Score for Pancreatoduodenectomy (a-FRS): Design and International External Validation**

Dutch Pancreatic Cancer Group; Mungroop, Timothy H.; van Rijssen, L. Bengt; van Klaveren, David; Smits, F. Jasmijn; van Woerden, Victor; Linnemann, Ralph J.; de Pastena, Matteo; Klompmaker, Sjors; Marchegiani, Giovanni; Ecker, Brett L.; van Dieren, Susan; Bonsing, Bert; Busch, Olivier R.; van Dam, Ronald M.; Erdmann, Joris; van Eijck, Casper H.; Gerhards, Michael F.; van Goor, Harry; van der Harst, Erwin; de Hingh, Ignace H.; de Jong, Koert P.; Kazemier, Geert; Luyer, Misha; Shamali, Awad; Barbaro, Salvatore; Armstrong, Thomas; Takhar, Arjun; Hamady, Zaed; Klaase, Joost; Lips, Daan J.; Molenaar, I. Quintus; Nieuwenhuijs, Vincent B.; Rupert, Coen; van Santvoort, Hjalmar C.; Scheepers, Joris J.; van der Schelling, George P.; Bassi, Claudio; Vollmer, Charles M.; Steyerberg, Ewout W.; Abu Hilal, Mohammed; Groot Koerkamp, Bas; Besselink, Marc G.

*Published in:*  
Annals of surgery

*DOI:*  
[10.1097/SLA.0000000000002620](https://doi.org/10.1097/SLA.0000000000002620)

Published: 01/05/2019

#### *Citation for published version (APA):*

Dutch Pancreatic Cancer Group, Mungroop, T. H., van Rijssen, L. B., van Klaveren, D., Smits, F. J., van Woerden, V., Linnemann, R. J., de Pastena, M., Klompmaker, S., Marchegiani, G., Ecker, B. L., van Dieren, S., Bonsing, B., Busch, O. R., van Dam, R. M., Erdmann, J., van Eijck, C. H., Gerhards, M. F., van Goor, H., ... Besselink, M. G. (2019). Alternative Fistula Risk Score for Pancreatoduodenectomy (a-FRS): Design and International External Validation. *Annals of surgery*, 269(5), 937-943.  
<https://doi.org/10.1097/SLA.0000000000002620>

#### **General rights**

Copyright and moral rights for the publications made accessible in the public portal are retained by the authors and/or other copyright owners and it is a condition of accessing publications that users recognise and abide by the legal requirements associated with these rights.

- Users may download and print one copy of any publication from the public portal for the purpose of private study or research.
- You may not further distribute the material or use it for any profit-making activity or commercial gain
- You may freely distribute the URL identifying the publication in the public portal ?

#### **Take down policy**

If you believe that this document breaches copyright please contact us providing details, and we will remove access to the work immediately and investigate your claim.

# Alternative Fistula Risk Score for Pancreatoduodenectomy (a-FRS)

## Design and International External Validation

Timothy H. Mungroop, MD,\* L. Bengt van Rijssen, MD,\* David van Klaveren, PhD,† F. Jasmijn Smits, MD,‡ Victor van Woerden, MD,§ Ralph J. Linnemann, MD,¶ Matteo de Pastena, MD,|| Sjors Klomp maker, MD,\* Giovanni Marchegiani, MD,|| Brett L. Ecker, MD,\*\* Susan van Dieren, PhD,\* Bert Bonsing, MD,\*\* Olivier R. Busch, MD,\* Ronald M. van Dam, MD,§ Joris Erdmann, MD,†† Casper H. van Eijck, MD,‡‡ Michael F. Gerhards, MD,§§ Harry van Goor, MD,¶¶ Erwin van der Harst, MD,|||| Ignace H. de Hingh, MD,\*\*\* Koert P. de Jong, MD,††† Geert Kazemier, MD,‡‡‡ Misha Luyer, MD,\*\*\* Awad Shamali, MD,§§§ Salvatore Barbaro, MD,§§§ Thomas Armstrong, MD,§§§ Arjun Takhar, MD,§§§ Zaed Hamady, MD,§§§ Joost Klaase, MD,¶¶¶ Daan J. Lips, MD,||||| I. Quintus Molenaar, MD,‡ Vincent B. Nieuwenhuijs, MD,¶ Coen Rupert, MD,\*\*\*\* Hjalmar C. van Santvoort, MD,†††† Joris J. Scheepers, MD,‡‡‡‡ George P. van der Schelling, MD,§§§§ Claudio Bassi, MD,|| Charles M. Vollmer, MD,\*\* Ewout W. Steyerberg, PhD,‡‡ Mohammed Abu Hilal, MD,§§§ Bas Groot Koerkamp, MD,‡‡ and Marc G. Besselink, MD, MSc, PhD\*,  
for the Dutch Pancreatic Cancer Group

**Objective:** The aim of this study was to develop an alternative fistula risk score (a-FRS) for postoperative pancreatic fistula (POPF) after pancreatoduodenectomy, without blood loss as a predictor.

**Background:** Blood loss, one of the predictors of the original-FRS, was not a significant factor during 2 recent external validations.

**Methods:** The a-FRS was developed in 2 databases: the Dutch Pancreatic Cancer Audit (18 centers) and the University Hospital Southampton NHS. Primary outcome was grade B/C POPF according to the 2005 International Study Group on Pancreatic Surgery (ISGPS) definition. The score was externally validated in 2 independent databases (University Hospital of Verona and University Hospital of Pennsylvania), using both 2005 and 2016 ISGPS definitions. The a-FRS was also compared with the original-FRS.

**Results:** For model design, 1924 patients were included of whom 12% developed POPF. Three predictors were strongly associated with POPF: soft pancreatic texture [odds ratio (OR) 2.58, 95% confidence interval (95% CI) 1.80–3.69], small pancreatic duct diameter (per mm increase, OR: 0.68, 95% CI: 0.61–0.76), and high body mass index (BMI) (per kg/m<sup>2</sup> increase, OR: 1.07, 95% CI: 1.04–1.11). Discrimination was adequate with an area under curve (AUC) of 0.75 (95% CI: 0.71–0.78) after internal validation, and 0.78 (0.74–0.82) after external validation. The predictive capacity of a-FRS was comparable with the original-FRS, both for the 2005 definition (AUC 0.78 vs 0.75,  $P = 0.03$ ), and 2016 definition (AUC 0.72 vs 0.70,  $P = 0.05$ ).

**Conclusion:** The a-FRS predicts POPF after pancreatoduodenectomy based on 3 easily available variables (pancreatic texture, duct diameter, BMI) without blood loss and pathology, and was successfully validated for both

From the \*Department of Surgery, Cancer Center Amsterdam, Academic Medical Center, Amsterdam, the Netherlands; †Department of Public Health, Erasmus MC - University Medical Center Rotterdam, Rotterdam, the Netherlands; ‡Department of Surgery, University Medical Center Utrecht, Utrecht, the Netherlands; §Department of Surgery, Maastricht University Medical Center, Maastricht, the Netherlands; ¶Department of Surgery, Isala Clinics, Zwolle, the Netherlands; ||Department of Surgery, Pancreas Institute of the University of Verona Hospital Trust, Verona, Italy; \*\*Department of Surgery, Hospital of the University of Pennsylvania, Philadelphia, PA; ††Department of Surgery, Leiden University Medical Center, Leiden, the Netherlands; ‡‡Department of Surgery, Erasmus Medical Center, Rotterdam, the Netherlands; §§Department of Surgery, OLVG Oost, Amsterdam, the Netherlands; ¶¶Department of Surgery, Radboud University Medical Center, the Netherlands; ||||Department of Surgery, Maasstad Hospital, Rotterdam, the Netherlands; \*\*\*Department of Surgery, Catharina Hospital, Eindhoven, the Netherlands; †††Department of Surgery, University Medical Center Groningen, Groningen, the Netherlands; ‡‡‡Department of Surgery, VU University Medical Center, Amsterdam, the Netherlands; §§§Department of Surgery, University Hospital Southampton NHS Foundation Trust, Southampton, UK; ¶¶¶Department of Surgery, Medisch Spectrum Twente, Enschede, the Netherlands; |||||Department of Surgery, Jeroen Bosch Hospital, 's Hertogenbosch, the Netherlands; \*\*\*\*Department of Surgery, Tjongerschans Hospital, Heerenveen, the Netherlands; ††††Department of Surgery, St. Antonius Hospital, Nieuwegein, the Netherlands; ‡‡‡‡Department of Surgery, Reinier de Graaf Gasthuis, Delft, the Netherlands; and §§§§Department of Surgery, Amphia Hospital, Breda, the Netherlands.

Mohammed Abu Hilal, Bas Groot Koerkamp, and Marc G. Besselink shared senior authorship.

Study conception and design: Mungroop, van Rijssen, Groot Koerkamp, Besselink

Acquisition of data: Mungroop, van Rijssen, Smits, van Woerden, DePastena, Marchegiani, Ecker, Bonsing, Busch, van Dam, Erdmann, van Eijck, Gerhards, van Goor, van der Harst, de Hingh, de Jong, Kazemier, Luyer, Shamali, Barbaro, Armstrong, Takhar, Hamady, Klaase, Lips, Molenaar, Nieuwenhuijs, Rupert, van Santvoort, Scheepers, van der Schelling, Bassi, Vollmer, Abu Hilal, Groot Koerkamp, Besselink.

Analysis and interpretation of data: Mungroop, van Rijssen, van Klaveren, Klomp maker, van Dieren, Vollmer, Steyerberg, Groot Koerkamp, Besselink

Drafting of manuscript: Mungroop, Groot Koerkamp, Besselink.

Critical revision: Mungroop, van Rijssen, van Klaveren, Smits, van Woerden, Linnemann, Klomp maker, Marchegiani, Ecker, DePastena, Bassi, Bonsing, Busch, van Dam, Erdmann, van Eijck, Gerhards, van Goor, van der Harst, de Hingh, de Jong, Kazemier, Luyer, Shamali, Barbaro, Armstrong, Takhar, Hamady, Klaase, Lips, Molenaar, Nieuwenhuijs, Rupert, van Santvoort, Scheepers, van der Schelling, Bassi, Vollmer, Steyerberg, Abu Hilal, Groot Koerkamp, Besselink.

This research was funded in part by a grant from the Dutch Cancer Society (grant number UVA2013-5842).

The authors have no conflicts of interest.

Reprints: Marc G. Besselink, MD, MSc, PhD, Department of Surgery, Cancer Center Amsterdam, Academic Medical Center, Office G4-196, Meibergdreef 9, 1105 AZ Amsterdam, the Netherlands. E-mail: m.g.besselink@amc.nl; Timothy H. Mungroop, MD, Department of Surgery, Cancer Center Amsterdam, Academic Medical Center, Office G4-196, Meibergdreef 9, 1105 AZ Amsterdam, the Netherlands. E-mail: t.h.mungroop@amc.nl.

Copyright © 2017 Wolters Kluwer Health, Inc. All rights reserved.

ISSN: 0003-4932/17/26905-0937

DOI: 10.1097/SLA.0000000000002620

the 2005 and 2016 POPF definition. The online calculator is available at [www.pancreascalculator.com](http://www.pancreascalculator.com).

**Keywords:** complication, pancreas, pancreatic fistula, prediction model

(*Ann Surg* 2019;269:937–943)

Postoperative pancreatic fistula (POPF) is one of the most threatening complications after pancreatoduodenectomy (PD). POPF occurs in up to 20% of patients and are typically associated with increased hospital stay, costs, reintervention rates, and mortality.<sup>1–3</sup>

Prediction of the risk of POPF can optimize individual treatment decisions (eg, drain placement, use of somatostatin analogues) and therefore several fistula risk models have been proposed.<sup>2,4–13</sup> These models were typically built with single-center data, often lacked adequate (external) validation, and most have not been widely implemented in daily practice. The validated Fistula Risk Score (FRS) by Callery et al<sup>2</sup> is the most cited and best used POPF prediction model. The FRS predicts POPF based on gland texture, pancreatic duct diameter, intraoperative blood loss, and definitive pathology.

Some have argued that a FRS without blood loss could be preferred.<sup>14</sup> First, blood loss was not a significant factor at 2 recent external validations.<sup>14,15</sup> Second, it is currently not registered in several audits, for example, not only the *National Surgical Quality Improvement Program* (US-NSQIP) but also the Dutch Pancreatic Cancer Audit (DPCA). Third, blood loss depends on surgical quality, and is therefore not a suitable prognostic factor for adjusting POPF-risk for benchmarking. Fourth, several studies have argued that estimation of blood loss during surgery is unreliable and inaccurate, and this metric therefore should not be used to judge physician performance or patient outcomes.<sup>16–18</sup> Finally, in future patients, this factor may be even less predictive for POPF, because, for example, minimally invasive PD seems to lead to less blood loss but similar rates of POPF.<sup>14,19</sup>

In 2016, a new definition of POPF was presented by the International Study Group on Pancreatic Surgery (ISGPS), and up to our knowledge, no POPF prediction model has been validated for prediction of POPF according to this new ISGPS classification.

The aim of this study was therefore to develop and externally validate a POPF prediction model for both definitions, without blood loss.

## METHODS

The TRIPOD guidelines<sup>20</sup> for multivariable prediction models were followed for the design, internal and external validation, and reporting of this clinical prediction model. The Medical Ethics Review Committee of the Academic Medical Center Amsterdam (the Netherlands) waived the need for consent.

### Patients and Methods

For model design, data from 2 combined databases were used: the DPCA (18 centers; January 2014 to March 2016) and the University Hospital Southampton (UK, National Health Service; January 2007 to December 2016). The DPCA is a nationwide, mandatory, prospective audit of pancreatic surgery. All 18 centers in the Netherlands performing PD participate in this audit, each performing a minimum of 20 PDs annually. The PD database of the University hospital Southampton NHS Trust Foundation, UK, is a prospectively maintained database for pancreatic surgery.

For external validation, patient outcomes data from 2 high-volume pancreatic surgery centers were used: the University of

Verona Hospital Trust (Verona, Italy; 2014 to 2016) and the University Hospital of Pennsylvania (Philadelphia [PA]; 2004 to 2015).

### Definitions, Outcome, and Predictors

Primary outcome was POPF defined according to the 2005 ISGPS definition<sup>21</sup> of grade B/C fistula (Appendix 1). An exploratory univariate analysis (by comparison of means) was performed in the DPCA data. Significant predictors were added in the multivariable analysis and combined with Southampton data. Preoperative variables assessed included age, sex, body mass index (BMI), American Society of Anesthesiologist (ASA) physical status, pancreatic duct diameter (on preoperative imaging, measured at location where the pancreas is to be transected), presence of (medically treated) diabetes mellitus, preoperative biliary drainage, year of surgery, any comorbidity, cardiac comorbidity, vascular comorbidity, pulmonary comorbidity, neurologic/psychiatric comorbidity, gastrointestinal comorbidity, urogenital comorbidity, thrombotic comorbidity, comorbidity related to disease of muscles and joints, endocrine comorbidity, infectious diseases, history of malignancy, and neo-adjuvant treatment. Intraoperative variables included were pancreatic texture (soft or not soft), vascular resection, and multi-visceral resection. Duct size was assessed in the design cohort on the most recent preoperative computed tomography (CT)-scan. The median interval between imaging and surgery was 5 weeks [interquartile range (IQR): 3 to 7]. The a-FRS and original-FRS were compared in the external validation cohort, as these centers (Verona and Pennsylvania) were not used for the design of either score. In the Verona database, both the ISGPS 2005 and 2016 definitions were scored, and in the Pennsylvania database, the ISGPS 2016 definition was scored. In the external validation cohort, duct size was assessed intraoperatively.

### Statistical Analysis

Statistical analysis was performed using SPSS version 22.0 (IBM corp., Armonk, NY) and STATA version 14.2 (StataCorp., College Station, TX). Normal distribution of data was assessed using visual inspection of histograms. Normally distributed data were presented as mean with standard deviation (SD) and non-normally distributed data were presented as median with IQR. Categorical variables are presented as counts and proportions. The level for statistical significance was set at  $P < 0.05$ . Nonlinearity was tested in continuous variables, but this did not lead to transformations. Duct size was truncated at 5 mm, and ASA class 3 and 4 were merged, as there were only 2 patients with ASA class 4. Missing data were imputed using multiple imputation (5 permutations).<sup>22</sup> This imputation procedure assumes that the missing data patterns can be modeled based on covariates and the outcome as observed in the data set. Pancreatic texture was missing in 5% of cases, BMI in 4%, and duct size in 27%.

A prediction model was developed using multivariable logistic regression modeling. Variables included were selected on the basis of a univariate screen in the DPCA data set, a literature search, and clinical relevance. The Akaike information criterion (AIC) was used for variable selection, resulting in a parsimonious model with minor loss of predictive ability.<sup>23</sup> This implies the model with the smallest difference in predictive capacity is selected in case this only leads to marginal loss of predictive value. The performance was assessed by of area under the receiver operating curve (AUC)<sup>24</sup> and calibration plots. Internal validation was undertaken using bootstrap resampling to obtain shrunken regression coefficients and an optimism corrected AUC.<sup>25</sup> Three risk groups were proposed to allow clinically relevant risk stratification. The original-FRS and a-FRS were calculated in the external validation cohort (Verona and Pennsylvania). The DeLong test was used to compare the difference between the AUCs of both scores.<sup>26</sup>

**TABLE 1.** Baseline Characteristics of the Study Cohorts

	Model Design Cohort (n = 1924)	External Validation Cohort (n = 926)
Age, median (IQR), mm	67 (60–74)	65 (56–72)
Sex (male), no. (%)	778 (57%)	491 (53%)
BMI, median (IQR), mm	25 (22–28)	25 (22–28)
ASA Class, no. (%)		
1	283 (15%)	45 (5%)
2	1273 (67%)	516 (56%)
3	339 (18%)	359 (39%)
4	2	6
Diabetes mellitus, no. (%)	403 (26%)	174 (19%)
Soft pancreatic texture, no. (%)	970 (54%)	511 (55%)
Duct size, median (IQR), mm	4 (2–5)	3 (2–4)
Pathology, no. (%)		
Pancreatic ductal adenocarcinoma	816 (43%)	402 (43%)
Chronic pancreatitis	50 (3%)	33 (4%)
Neuroendocrine	104 (5%)	80 (9%)
Cholangio-carcinoma	265 (14%)	61 (7%)
Ampullary carcinoma	265 (14%)	95 (10%)
Duodenal carcinoma	110 (6%)	46 (5%)
Cystic neoplasms (IPMN, MCN and serous cysts)	128 (7%)	114 (12%)
Other	221 (12%)	95 (10%)

ASA indicates American Society of Anesthesiologists; BMI, body mass index; IPMN, intraductal papillary mucinous neoplasm; MCN, mucinous cystic neoplasm.

## RESULTS

### Cohort Characteristics

In total, data of 2850 patients undergoing PD from 21 institutions in 4 countries were included in the model design and external validation cohorts. In the design cohort, 1924 consecutive patients were included with 232 (12%) patients developing POPF (2005 definition), see Table 1. The median age in this cohort was 67 (IQR: 60 to 74) years, median BMI was 25 (IQR 22 to 28) kg/m<sup>2</sup>, and 57% of patients were male. A surgical drain was placed in 99% of patients, octreotide was administered postoperatively in 63% of patients, and pancreatojejunostomy was the most frequently used pancreatic anastomosis (in 75% of patients).

The external validation cohort consisted of 926 patients with 131 (24%) patients developing POPF according to the 2005 definition (Verona only) and 154 (17%) in the 2016 definition (Verona and

Pennsylvania). In this external validation cohort (Verona and Pennsylvania), median age was 65 (IQR: 56 to 72) years, median BMI was 25 (IQR: 22 to 28), and 53% of patients was male, see Table 1.

### Model Design

The full model (based on male sex, age, soft pancreatic texture, duct size, ASA physical status, BMI, diabetes mellitus, and tumor location) had adequate discriminative ability [AUC 0.75, 95% confidence interval (95% CI): 0.71–0.78]; Table 2]. The final model consisted of 3 strong predictors: soft pancreatic texture [odds ratio (OR): 2.58, 95% CI: 1.80–3.69], decreasing pancreatic duct diameter (continuous, truncated at 5 mm, OR per mm increase: 0.68, 95% CI: 0.61–0.76), and increasing BMI per index point (OR: 1.07, 95% CI: 1.04–1.11) (see Table 2). Discrimination of the model was adequate with an AUC of 0.75 (95% CI: 0.71–0.78) after internal validation, see Fig. 1A. For calibration after internal validation, see Fig. 2. An online calculator was made available at [pancreascalculator.com](http://pancreascalculator.com) based on the following calculation:

$$P = \frac{\exp(-3.136 + 0.947[\text{texture}] + 0.0679[\text{BMI}] - 0.385[\text{PD size}])}{1 + \exp(-3.136 + 0.947[\text{texture}] + 0.0679[\text{BMI}] - 0.385[\text{PD size}])}$$

with  $P$  = probability, texture 1 = soft, and 0 if not soft, PD size = pancreatic duct size in mm (truncated at 5).

### External Validation: 2005 and 2016 ISGPs Definitions

External validation was performed in the external cohort using the 2005 POPF definition. Discrimination was adequate (Fig. 1A, AUC of 0.78, 95% CI: 0.74–0.82). Discrimination in the external cohort was similar using the 2016 POPF definition (Fig. 1B, AUC of 0.72, 95% CI: 0.68–0.76) and calibration was adequate, see Fig. 2.

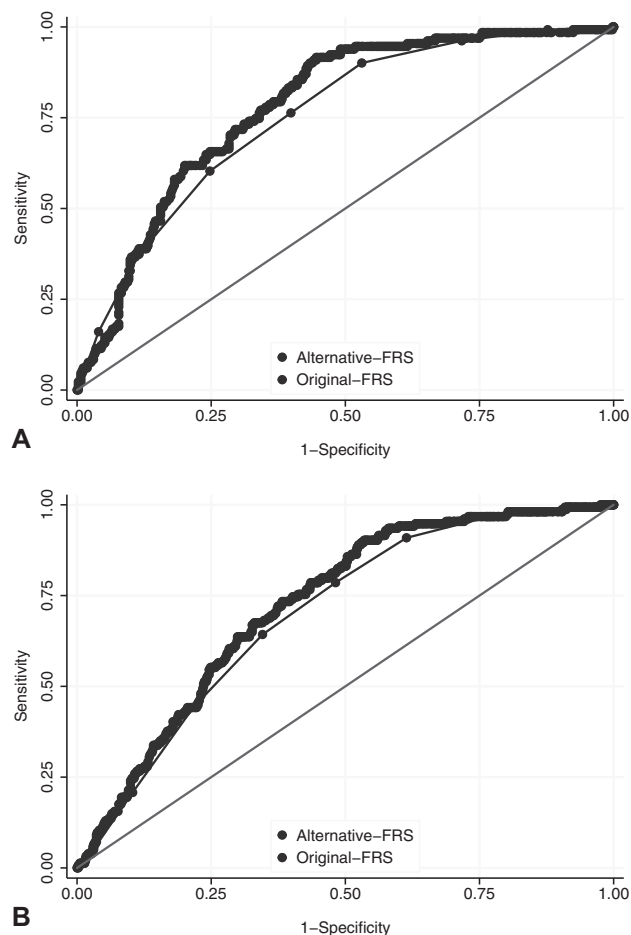
### RISK Groups

Three risk groups were identified based on the risk distribution; low (0% to 5%), intermediate (>5% to 20%), and high (≥20%) of POPF using both the design and external validation cohort, see Fig. 3. Using the 2005 definition, the observed mean risk was 2.7% (95% CI: 1.4–4.0) in the low-risk group, 14% (95% CI: 12–15) the intermediate-risk group, and 35% (95% CI: 30–39) in the high-risk group (Fisher exact test:  $P < 0.001$ ). Using the 2016 definition, the

**TABLE 2.** Model Design

	Full Model			Selected Model		
	Odds Ratio	95% CI	$P$	Odds Ratio	95% CI	$P$
Area under curve (AUC)	AUC 0.75	0.71–0.78		AUC 0.75	0.71–0.78	
Male	1.46	1.08–2.00	0.015	—	—	—
Age, yrs	0.99	0.98–1.01	0.485	—	—	—
Soft pancreatic texture	2.29	1.59–3.29	<0.001	2.58	1.80–3.69	<0.001
Duct size, per mm increase	0.69	0.57–0.83	<0.001	0.68	0.61–0.76	<0.001
ASA Class	—	—	—	—	—	—
1	Reference	—	—	—	—	—
2	0.69	0.45–1.07	0.125	—	—	—
3/4	1.17	0.71–1.94	0.652	—	—	—
BMI, kg/m <sup>2</sup>	1.07	1.03–1.11	<0.001	1.07	1.04–1.11	<0.001
Diabetes Mellitus	0.94	0.64–1.38	0.957	—	—	—
Tumor location (Pancreatic vs other)	0.64	0.46–0.89	0.009	—	—	—

ASA indicates American Society of Anesthesiologists; BMI, body mass index; CI, confidence interval.



**FIGURE 1.** Comparison of alternative-FRS and original-FRS for prediction of POPF according to the 2005 ISGPS definition (A) and 2016 ISGPS definition (B).

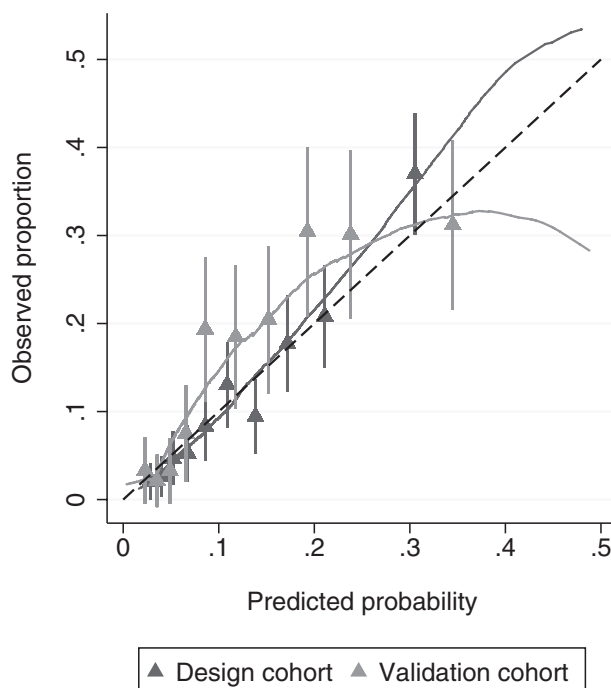
observed mean risk was 2.8% (95% CI: 0.8–4.9) in the low-risk group, 18% (95% CI: 14–21) in the intermediate-risk group, and 31% (95% CI: 24–37) in the high-risk group (Fisher exact test:  $P < 0.001$ ).

### Comparison with the Original-FRS

In the external validation cohort, the a-FRS displayed a marginal improvement compared with the original-FRS for prediction POPF according to the 2005 definition (AUC 0.78, 95% CI: 0.74–0.82 vs 0.75 95% CI 0.71–0.80, DeLong test:  $P = 0.029$ ). Furthermore, for prediction of POPF according to the 2016 definition, the a-FRS performed equally well compared with the original-FRS (AUC 0.72, 95% CI: 0.68–0.76 vs 0.70, 95% CI 0.66–0.74, DeLong test:  $P = 0.050$ ).

## DISCUSSION

The a-FRS is an externally and internationally validated score to predict the risk of POPF after PD without the need for intraoperative blood loss or pathology as variables. The score is based on 3 intraoperatively available variables: duct size, pancreatic texture, and BMI, and was designed using (nationwide) data from over 1900 patients. The a-FRS is the first POPF prediction model, which was successfully validated for both the ISGPS 2005 and 2016 definitions,



**FIGURE 2.** Calibration plot of the a-FRS in the design cohort and external validation cohort (ISGPS 2016). The triangles indicate the observed frequencies by deciles of predicted probabilities. This LOESS curve is a locally weighted polynomial regression.

and performed at least as good as the original-FRS but without blood loss as a variable.

At least 11 prediction models for POPF after PD have been proposed. Most of these models have not been (adequately) externally validated, which limits applicability in clinical practice.<sup>27</sup> Besides, some models also included clinically irrelevant 2005 “grade A” POPF.<sup>5,7,8,13</sup> In the 2016 update of the ISGPS definition, grade A POPF has been reclassified to “biochemical leak.”<sup>28</sup> Finally, a number of the existing risk models include postoperative factors, such as drain amylase, which limit the applicability to guide early treatment decision.<sup>2,7,11</sup> The predictors included in the a-FRS are strong predictors in the cohorts used in this study ( $P < 0.001$ ) and have been recognized as universal predictors.<sup>2,4,5,7,8,10–12,28</sup> A recent POPF prediction model without blood loss and based on NSQIP data showed poor performance at external validation (AUC of 0.62).<sup>29</sup> The original-FRS, however, showed a high AUC (>0.90) in design. Typically, prediction models show impressive accuracy in the (single-center) derivation cohort, because the model is optimized to fit the data. Performance is usually lower at external validation.<sup>14,15,30</sup> Model performance should be compared in geographically different external validation cohorts.

The (a-)FRS can be applied to select patients for somatostatin analogues or placement of surgical drains.<sup>31</sup> A recent worldwide survey showed that large variations exist between surgeons in the management after PD.<sup>32</sup> Large variations in practice may be indicative for room for improvement. The (a-)FRS could help surgeons to objectify the risk of POPF and design, study, and implement decision rules. Low-risk patients could be selected for a no-drain strategy. This is especially relevant, as several studies have recently shown that complications may arise from these surgical drains.<sup>33,34</sup>

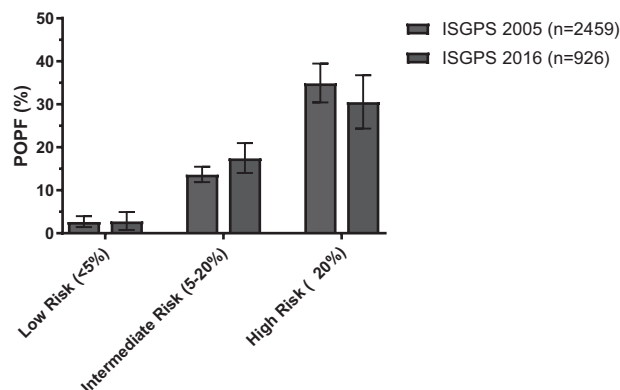


FIGURE 3. Risk groups of the a-FRS.

Furthermore, the (a-)FRS can lead to improved cost-effectiveness. For example, with somatostatin analogues such as Pasireotide, where surgeons might want to use different thresholds for “high-risk” because of heterogeneity in pharmacy costs and financial consequences of treatment and complications.<sup>35</sup> In low-risk patients, these (expensive) analogues can be omitted, as the absolute risk reduction in these patients may not justify the costs. As a result, medication can be allowed in a specific setting. If this medication was not used otherwise, or less optimally, this could lead to reduction in POPF. At last, for research purposes models such as FRS, and especially a-FRS can be used for evaluation of surgeons technical performance,<sup>36</sup> risk-adjusted comparison of surgical outcome,<sup>37</sup> stratification in randomized controlled trials (RCTs) as well as high-risk subgroup analysis. We have recently used this score in a pilot study wherein we applied a somatostatin analogue intraoperatively only in high-risk patients ( $>15\%$  risk). Future prospective studies can stratify treatment based on the outcome of this score (eg, regarding use of drains, somatostatin analogues, and other measures) and could provide treatment algorithms to be tested in randomized trials.

We were able to successfully simplify POPF prediction, as the a-FRS consists of 3 (easily available) variables without loss of predictive capacity as compared with the original-FRS. The variables blood loss and pathology were successfully omitted. Blood loss is partially related to surgical quality and may therefore rather not be used for risk-adjusted comparisons. Although experienced pancreatic surgeons might predict final pathology outcome correctly in 90% of patients, it may differ from the preoperative assessment.<sup>38</sup>

Ideally, we would have designed a score that defines the risk of POPF already before surgery. This could be useful in starting preventive treatment before surgery, or referral of high-risk patients to undergo surgery in expert centers. Although we attempted to do so, this led to a substantially lower predictive ability. This was caused mostly because of the strong predictive value of pancreatic texture, which independently of pancreatic duct size predicts POPF (Table 2, Appendix 2). Future studies should therefore attempt to determine or predict pancreatic texture preoperatively.

This study has some limitations. First, in the design, cohort duct size was measured on preoperative imaging, and in the external validation database, this was done during surgery. However, duct size on preoperative imaging is an accurate measurement of the actual duct size.<sup>29</sup> Second, the a-FRS was developed to predict the risk of POPF using the 2005 definition, as the 2016 ISGPS definition was not available during the build-up of this cohort. However, as the a-FRS was successfully validated for both the 2005 and 2016 ISGPS

definitions, we feel this confirms its validity and broad applicability. Third, the observational nature of the study makes it impossible to rule out residual confounding.

Strengths of this study include the large dataset, including variation between the international cohorts, with many surgeons and hospitals working according to their local practices, and a design cohort with nationwide audit data of PDs performed including the full spectrum of indications, and variations in operative techniques and patient management.<sup>39</sup> A second strength is the use of sound statistical methods for the development of this prediction model.<sup>40</sup> The optimal method consists of using a large multi-institutional dataset for development,<sup>27</sup> using multiple imputation for missing data, and using continuous predictors as such instead of categorizing without assuming linearity.<sup>41</sup> We decided to make an online calculator, as this allows for an exact risk calculation, as cut-offs for high-intermediate-low risk groups may differ between institutions. Furthermore, the calculator provides a 95% CI to reflect uncertainty in the risk estimate. We made POPF risk groups of 0% to 5%, 5% to 20%, and  $\geq 20\%$ . This could be useful in stratifying fistula management (eg, decision to leave drains or administer Pasireotide).

Future studies should investigate the benefits of using a-FRS on individual health outcomes and/or cost-effectiveness of care, preferably within a randomized trial using the a-FRS to guide decision-making in high-risk patients. Besides, the addition of extra variables to the a-FRS should be studied but always considering the effort-reward balance, especially with nonreadily available variables are considered. Such studies should involve large multicenter datasets with geographical external validation.

## CONCLUSION

POPF can be predicted accurately during surgery with the a-FRS using pancreatic texture, duct size, and BMI as variables. The model, which does not require blood loss or pathology, may guide intraoperative decision-making, improve stratification and analysis in RCTs, and allow risk-adjusted comparisons.

## ACKNOWLEDGMENT

The authors gratefully thank Rick Pleijhuis and Rob Mentink from Evidencio.com for their assistance with the online risk calculator.

## REFERENCES

- Ahmad SA, Edwards MJ, Sutton JM, et al. Factors influencing readmission after pancreaticoduodenectomy: a multi-institutional study of 1302 patients. *Ann Surg*. 2012;256:529–537.
- Callery MP, Pratt WB, Kent TS, et al. A prospectively validated clinical risk score accurately predicts pancreatic fistula after pancreatoduodenectomy. *J Am Coll Surg*. 2013;216:1–14.
- Denbo JW, Orr WS, Zarzaar BL, et al. Toward defining grade C pancreatic fistula following pancreaticoduodenectomy: incidence, risk factors, management and outcome. *HPB (Oxford)*. 2012;14:589–593.
- Chen JY, Feng J, Wang XQ, et al. Risk scoring system and predictor for clinically relevant pancreatic fistula after pancreaticoduodenectomy. *World J Gastroenterol*. 2015;21:5926–5933.
- Roberts KJ, Hodson J, Mehrzad H, et al. A preoperative predictive score of pancreatic fistula following pancreatoduodenectomy. *HPB (Oxford)*. 2014;16:620–628.
- Kosaka H, Kuroda N, Suzumura K, et al. Multivariate logistic regression analysis for prediction of clinically relevant pancreatic fistula in the early phase after pancreaticoduodenectomy. *J Hepatobiliary Pancreat Sci*. 2014; 21:128–133.
- Kim JY, Park JS, Kim JK, et al. A model for predicting pancreatic leakage after pancreaticoduodenectomy based on the international study group of pancreatic surgery classification. *Korean J Hepatobiliary Pancreat Surg*. 2013;17:166–170.
- Graham JA, Kayser R, Smirniotopoulos J, et al. Probability prediction of a postoperative pancreatic fistula after a pancreaticoduodenectomy allows for

- more transparency with patients and can facilitate management of expectations. *J Surg Oncol*. 2013;108:137–138.
9. Fujiwara Y, Misawa T, Shiba H, et al. A novel postoperative inflammatory score predicts postoperative pancreatic fistula after pancreatic resection. *Anticancer Res*. 2013;33:5005–5010.
  10. Ansoorge C, Nordin JZ, Lundell L, et al. Diagnostic value of abdominal drainage in individual risk assessment of pancreatic fistula following pancreaticoduodenectomy. *Br J Surg*. 2014;101:100–108.
  11. Yamamoto Y, Sakamoto Y, Nara S, et al. A preoperative predictive scoring system for postoperative pancreatic fistula after pancreaticoduodenectomy. *World J Surg*. 2011;35:2747–2755.
  12. Gaujoux S, Cortes A, Couvelard A, et al. Fatty pancreas and increased body mass index are risk factors of pancreatic fistula after pancreaticoduodenectomy. *Surgery*. 2010;148:15–23.
  13. Wellner UF, Kayser G, Lapshyn H, et al. A simple scoring system based on clinical factors related to pancreatic texture predicts postoperative pancreatic fistula preoperatively. *HPB (Oxford)*. 2010;12:696–702.
  14. Shubert CR, Wagie AE, Farnell MB, et al. Clinical risk score to predict pancreatic fistula after pancreaticoduodenectomy: independent external validation for open and laparoscopic approaches. *J Am Coll Surg*. 2015;221:689–698.
  15. Grendar J, Jutric Z, Leal JN, et al. Validation of Fistula Risk Score calculator in diverse North American HPB practices. *HPB (Oxford)*. 2017;19:508–514.
  16. Rothermel LD, Lipman JM. Estimation of blood loss is inaccurate and unreliable. *Surgery*. 2016;160:946–953.
  17. Schorn MN. Measurement of blood loss: review of the literature. *J Midwifery Womens Health*. 2010;55:20–27.
  18. Meiser A, Casagrande O, Skipka G, et al. Quantification of blood loss. How precise is visual estimation and what does its accuracy depend on? *Anaesthesist*. 2001;50:13–20.
  19. Pedziwiatr M, Malczak P, Pisarska M, et al. Minimally invasive versus open pancreaticoduodenectomy-systematic review and meta-analysis. *Langenbecks Arch Surg*. 2017;402:841–851.
  20. Collins GS, Reitsma JB, Altman DG, et al. Transparent Reporting of a multivariable prediction model for Individual Prognosis or Diagnosis (TRIPOD): the TRIPOD statement. *Ann Intern Med*. 2015;162:55–63.
  21. Bassi C, Dervenis C, Butturini G, et al. Postoperative pancreatic fistula: an international study group (ISGPF) definition. *Surgery*. 2005;138:8–13.
  22. van Buuren S. Multiple imputation of discrete and continuous data by fully conditional specification. *Stat Methods Med Res*. 2007;16:219–242.
  23. Posada D, Buckley TR. Model selection and model averaging in phylogenetics: advantages of Akaike information criterion and Bayesian approaches over likelihood ratio tests. *Syst Biol*. 2004;53:793–808.
  24. Steyerberg EW, Vickers AJ, Cook NR, et al. Assessing the performance of prediction models: a framework for traditional and novel measures. *Epidemiology*. 2010;21:128–138.
  25. Harrell FE Jr, Lee KL, Mark DB. Multivariable prognostic models: issues in developing models, evaluating assumptions and adequacy, and measuring and reducing errors. *Stat Med*. 1996;15:361–387.
  26. DeLong ER, DeLong DM, Clarke-Pearson DL. Comparing the areas under two or more correlated receiver operating characteristic curves: a nonparametric approach. *Biometrics*. 1988;44:837–845.
  27. Steyerberg EW, Moons KG, van der Windt DA, et al. Prognosis Research Strategy (PROGRESS) 3 prognostic model research. *PLoS Med*. 2013;10:e1001381.
  28. Shrikhande SV, Sivasanker M, Vollmer CM, et al. Pancreatic anastomosis after pancreaticoduodenectomy: a position statement by the International Study Group of Pancreatic Surgery (ISGPS). *Surgery*. 2017;161:1221–1234.
  29. Olga Kantor MST, Henry A, Pitt, et al. Risk score for preoperative risk stratification in patients undergoing pancreaticoduodenectomy. *J Am Coll Surg*. 2017;224:816–825.
  30. Miller BC, Christein JD, Behrman SW, et al. A multi-institutional external validation of the fistula risk score for pancreaticoduodenectomy. *J Gastrointest Surg*. 2014;18:172–179. discussion 179–180.
  31. McMillan MT, Malleo G, Bassi C, et al. Multicenter, prospective trial of selective drain management for pancreaticoduodenectomy using risk stratification. *Ann Surg*. 2017;265:1209–1218.
  32. McMillan MT, Malleo G, Bassi C, et al. Pancreatic fistula risk for pancreaticoduodenectomy: an international survey of surgeon perception. *HPB (Oxford)*. 2017;19:515–524.
  33. Bassi C, Molinari E, Malleo G, et al. Early versus late drain removal after standard pancreatic resections: results of a prospective randomized trial. *Ann Surg*. 2010;252:207–214.
  34. Witzigmann H, Diener MK, Kienkotter S, et al. No need for routine drainage after pancreatic head resection: the dual-center, randomized, controlled PANDRA trial (ISRCTN04937707). *Ann Surg*. 2016;264:528–537.
  35. Goyert N, Eeson G, Kagedan DJ, et al. Pasireotide for the prevention of pancreatic fistula following pancreaticoduodenectomy: a cost-effectiveness analysis. *Ann Surg*. 2017;265:2–10.
  36. Hogg ME, Zenati M, Novak S, et al. Grading of surgeon technical performance predicts postoperative pancreatic fistula for pancreaticoduodenectomy independent of patient-related variables. *Ann Surg*. 2016;264:482–491.
  37. McMillan MT, Soi S, Asbun HJ, et al. Risk-adjusted outcomes of clinically relevant pancreatic fistula following pancreaticoduodenectomy: a model for performance evaluation. *Ann Surg*. 2016;264:344–352.
  38. Gerritsen A, Molenaar IQ, Bollen TL, et al. Preoperative characteristics of patients with presumed pancreatic cancer but ultimately benign disease: a multicenter series of 344 pancreaticoduodenectomies. *Ann Surg Oncol*. 2014;21:3999–4006.
  39. Debray TP, Vergouwe Y, Koffijberg H, et al. A new framework to enhance the interpretation of external validation studies of clinical prediction models. *J Clin Epidemiol*. 2015;68:279–289.
  40. Moons KG, Kengne AP, Woodward M, et al. Risk prediction models: I. Development, internal validation, and assessing the incremental value of a new (bio)marker. *Heart*. 2012;98:683–690.
  41. Steyerberg EW, Eijkemans MJ, Harrell FE Jr, et al. Prognostic modeling with logistic regression analysis: in search of a sensible strategy in small data sets. *Med Decis Making*. 2001;21:45–56.



## APPENDIX 1. POPF Definition According to the ISGPS 2005 and 2016 Definitions

ISGPS 2005		ISGPS 2016	
POPF	Amylase >3 times institutional normal value or serum level	POPF	Amylase >3 times institutional serum upper level normal value
Grade A	- No therapeutic intervention required - No prolongation of hospitalization	Biochemical Leak	- No therapeutic intervention required
Grade B	- Therapeutic intervention required* - Prolongation of hospitalization* - Discharge with drains in situ*	Grade B	- Persistent drainage ≤21 days after surgery - Persistent drainage >21 days after surgery - Clinically relevant change in management of POPF* - Percutaneous or endoscopic drainage* - Angiographic procedures for bleeding* - Signs of infection without organ failure*
Grade C	- Surgical reintervention required* - Prolongation of hospitalization* - IC/ICU management required* - Death of patient*	Grade C	- Reoperation* - Organ failure* - Death*

ISGPS indicates International Study Group of Pancreatic Surgery; POPF, postoperative pancreatic fistula.

\*Treatment/event POPF related.

## APPENDIX 2. Univariate Screening of Risk Factors for Clinically Relevant POPF (ISGPS 2005 Grade B/C) in the Dutch Pancreatic Cancer Audit

	No POPF	POPF	P
Preoperative	—	—	—
Age, yrs, median (IQR)	68 (60–74)	66 (58–73)	0.143
Sex	—	—	0.020
Male, no. (%)	668 (56%)	110 (62%)	—
Female, no. (%)	525 (44%)	67 (38%)	—
BMI, kg/m <sup>2</sup> , median (IQR)	24 (22–27)	27 (24–30)	<0.001
ASA class, no. (%)	—	—	0.303
1	234 (15%)	40 (18%)	—
2	1142 (69%)	131 (58%)	—
3/4	282 (17%)	55 (24%)	—
ECOG performance status ≥1	108 (10%)	20 (13%)	0.326
Diabetes mellitus, no. (%)	357 (26%)	46 (24%)	0.540
Any comorbidity	890 (75%)	143 (81%)	0.076
Specific comorbidity	—	—	—
Cardiac	251 (21%)	47 (27%)	0.098
Vascular	389 (33%)	68 (38%)	0.125
Pulmonary	139 (12%)	32 (18%)	0.020
Neurologic/psychiatric	145 (12%)	32 (13%)	0.714
Gastrointestinal	155 (13%)	28 (16%)	0.289
Urogenital	93 (8%)	19 (11%)	0.186
Thrombotic	28 (3%)	8 (5%)	0.124
Muscles and joints	78 (7%)	19 (11%)	0.057
Endocrine	56 (5%)	12 (7%)	0.263
Infectious diseases	9 (1%)	3 (2%)	0.194
Malignancy	186 (16%)	30 (17%)	0.507
Year of surgery, yrs, median (IQR)	2014 (2014–2015)	2014 (2014–2015)	0.946
Neo-adjuvant treatment	49 (4%)	1 (1%)	0.016
Biliary drainage	564 (51%)	77 (45%)	0.189
Minimally invasive at start	71 (4%)	26 (11%)	<0.001
Duct size on imaging, mm, median (IQR)	4 (4–7)	2 (2–4)	<0.001
Intraoperative	—	—	—
Soft pancreatic texture, no. (%)	802 (51%)	168 (78%)	<0.001
Vascular resection	174 (15%)	14 (8%)	0.014
Additional organ resection	104 (9%)	18 (10%)	0.483

ASA indicates American Society of Anesthesiologists; BMI, body mass index; ECOG, Eastern Cooperative Oncology Group; POPF, postoperative pancreatic fistula.